

Note:
The Superstructure details shown are for use when removable deck forming is used and are the basis for measurement of Class S(AE) Concrete. See Standard Dwg. No. 14991 for allowable modifications and for tolerances when Permanent Deck Forming is used.

SLAB REINFORCING
Transverse: S501E @ 15" o.c. max. bent up over girders
S601E @ 15" o.c. max. in top and bottom
S701E @ 15" o.c. max. in top at parapet

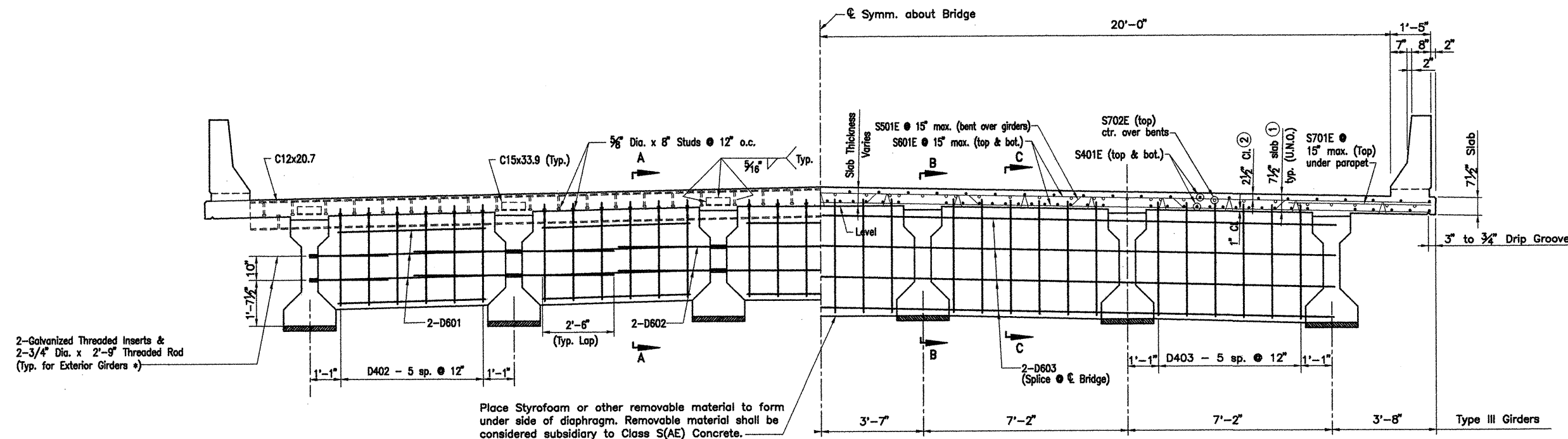
Longitudinal: S401E in top and bottom (Placed as shown)
S702E in top (Placed as shown)

PARAPET REINFORCING

For placing of parapet reinforcing see dwg. 41899

Note: Class I Protective Surface Treatment shall be applied to the Roadway Surface and to the Face and Top of the Concrete Parapet Rail.

DATE REVISED	DATE FILMED	DATE REVISED	DATE FILMED	FED. ROAD NO.	STATE	FED. AID PROJ. NO.	SHEET NO.	TOTAL SHEETS
					ARK.			
				JOB NO.		110503	92	233
				07027		308' UNIT		41897

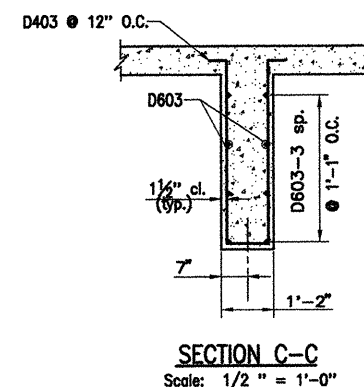
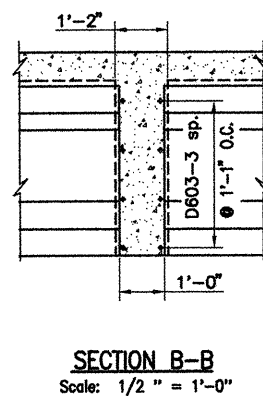
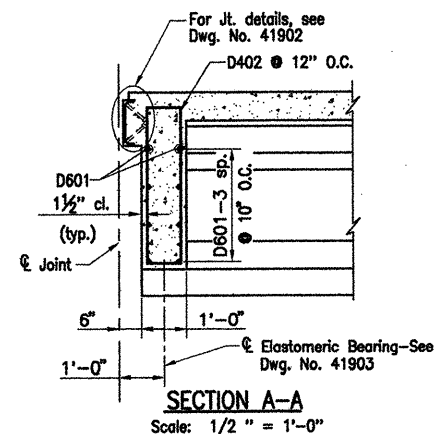


* Galvanized Threaded Inserts & 3/4" Dia. Threaded Rods to be AASHTO M270, Gr. 36. (Non-Pay item subsidiary to the item 'Prestressed Concrete Girders'. Galvanizing shall be in accordance with AASHTO M232

TYPICAL PART SECTION
AT END DIAPHRAGM BETWEEN ENDS OF GIRDERS
AT EXPANSION JOINT

TYPICAL PART SECTION
AT CONTINUOUS DIAPHRAGM BETWEEN ENDS OF GIRDERS
AT FIXED JOINT

- ① Tolerance: Minus: 1/4"
Plus: 1/2"
- ② Tolerance: Minus: 1/4"
Plus: Equal to amount of slab thickening used to meet slab thickness tolerance

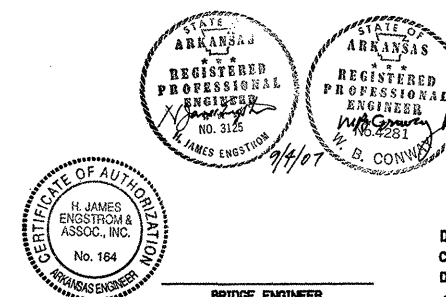


ALTERNATE NO. 1
WHITE RIVER RELIEF BRIDGE
DETAILS OF 308'-0" CONT.
PRESTRESSED CONCRETE GIRDER UNIT
(SHEET 3 OF 7)

ROC ROE & WHITE RIVER RELIEF
STRS. & APPRS. (CLARENDON) (F)
MONROE COUNTY

ROUTE 79 SEC. 13
ARIZONA STATE HIGHWAY COMMISSION
LITTLE ROCK, ARK.

Engstrom/Modjeski and Masters, Inc.



DRAWN BY: GPT/YO DATE: Sept. 07 FILENAME: b11050312.s03
CHECKED BY: GPT DATE: Nov. 01 SCALE: 1/2" = 1'-0"
DESIGNED BY: YO/GPT DATE: Nov. 01
BRIDGE NO. 07027 DRAWING NO. 41897